



NEWS



Lisa Apfelberg Acting
Executive Director

Impact Austin Members and Friends,

What an exciting month of September we've had, starting with our 15th Anniversary Kickoff event. Nearly 200 women enjoyed learning about *grit* and how it often takes gritty women, like the members of Impact Austin, to get things done. Speaker Caroline Miller was very impressed with Impact Austin and the grit we use on a regular basis to positively impact the Central Texas nonprofit community.

I will take this opportunity to thank Sharon Francia for the incredible amount of grit, energy, and time she put into being the president of Impact Austin's board for almost two years. Sharon was a huge asset to our organization and encompassed all of the things we would want in a board president. She was kind, thoughtful, and strategic, and she opened her home countless times for important meetings and celebratory events. Please join me in showing her your gratitude when you see her.

I want to welcome Lauren Paver, who stepped up as our board president after Sharon had to step away. Lauren has been a member of Impact Austin since 2008 and has served in a number of leadership roles within the organization. She is excited and humbled to be our president as we celebrate our 15th year. Lauren is a very strategic thinker and is excited to face the challenging question of what we want our next 15 years to look like. I know she looks forward to meeting more of you in the coming months!

The fall continues to be busy with a number of membership recruitment coffees and new member orientations on the calendar, as well as the frequent meetings of the Impact Austin zones. The Discovery Day committee and I are busy planning this exciting educational event that will be on Saturday, January 13th. I look forward to seeing many of you at one of these upcoming gatherings and thank you for all that you are doing to help us grow and move forward into our exciting 15th year!

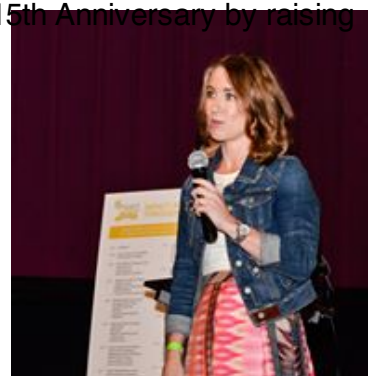
With gratitude,

Lisa Apfelberg, MSW

New Board President, Updated Giving Goals,
Recommitment to Membership Highlight Impact Austin's
15th Anniversary Kickoff

Impact Austin Sets \$500,000 as Grantmaking Goal by FY 2019

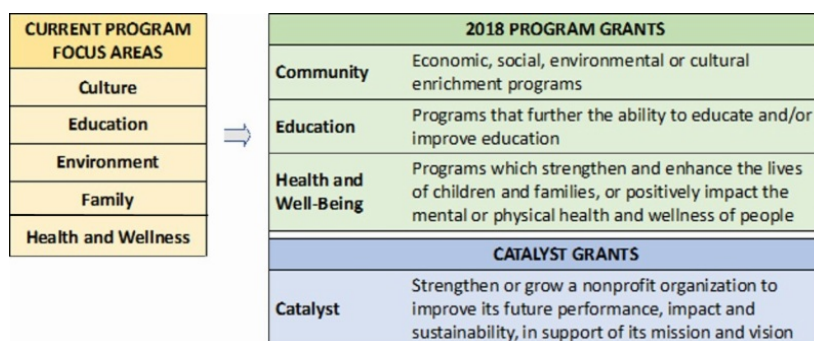
New Board President Lauren Paver kicked off Impact Austin's 15th Anniversary by raising the bar for the organization's grantmaking and membership. In an address to members and guests attending a special Impact Austin town hall event on Sept. 6, Paver revealed that Impact Austin plans to give \$500,000 or more in program and catalyst grants by June 2019, and expects to raise its membership numbers to 500 in the same timeframe. Paver cited the increasing needs from our nonprofit community, and said that by raising our own goals, Impact Austin is better positioned to help serve.



Also in her address, Paver reflected on a recent Impact Austin member survey that identified a 'wants list' of the membership. She responded with leadership's commitment to create opportunities for each member to enjoy a rich and rewarding experience with Impact Austin. More education about philanthropy in general, more opportunities to network and meet other Impact Austin members, and more and well scoped volunteer opportunities are among the membership-driven goals for the coming year.

Click [here](#) for more about the Impact of Gritty Women and coverage of the event.

Impact Austin Unveils New Grant Structure to Better Meet Community Needs



Health and Well-Being, Community, and Education are New Program Grant Focus Areas

Impact Austin is gearing up for our 2018 grant cycle with an exciting change to the grants program that will improve the process for our nonprofit partners. Effective this year, the number of program grant focus areas changes from five to three, while the scope of each is expanded. By broadening the focus areas, Impact Austin aims to create the opportunity for every qualified nonprofit to apply each year.

The new focus areas are Health and Well-Being; Community; and Education.

We will continue funding our catalyst grant at the same amount as our program grants, to underscore the importance of providing support for the long-term viability of nonprofit organizations.

Back to Our Future: Impact Austin Goes Old School to Grow and Give More



As a leader among collective giving groups nationwide, Impact Austin enjoys a consistently top level percentage of multi-year members and an extremely strong membership renewal rate of 75 percent. But resting on our success is not our style. We want to do more for Austin, and to do so, we must grow.

With so many members asking for an easy, friendly way to introduce friends and prospective members to the organization, Impact Austin board members had a collective 'aha' moment and asked Rebecca Powers, Impact Austin founder, to come back and lead the charge to expand the membership. Following the casual format that made Impact Austin a success in the beginning, Powers is orchestrating a series of gatherings - or informal 'coffees' - to introduce Impact Austin to members' friends and colleagues on a very personal and individual level.

Over the next few months, coffees will be held in locations across Austin, and members are encouraged to participate by inviting friends and colleagues who may wish to join. Attendees can expect information, laughter, and connection, and maybe even the inspiration to join or rejoin Impact Austin or become its newest volunteer. Contact information, calendar and general locations for coffees can be found [here](#).

Impact Austin Membership Calls for More Ways to Engage

Among the unique aspects of Impact Austin is the fact that we are almost fully member managed. With few exceptions, the operations, strategy, finance, grant awarding, education, and additional critical functions are performed by Impact Austin members who are able to commit extensive time to the organization.

While there have always been many ways to volunteer within Impact Austin, members have made it clear that they want other ways to engage within the organization. In response, Impact Austin is creating new networking opportunities, as well as improving the volunteer experience with deliberate skills to needs matching and clear communication about the 'scope of work' involved in each volunteer commitment. We are especially thankful to one of our members, Melissa Stewart, who has agreed to lead us in the task of matching volunteers to positions.

Among Impact Austin members, the spectrum is broad in terms of expertise and time. A member may wish to apply a specific skill to a project or committee, while another may prefer to write a check and quietly enjoy the effect of the collective giving process. Every level of engagement is valued and respected. We would be nowhere without the range of personalities and participation levels, after all.

Just some of the ways to engage with Impact Austin are:

Take a Hands-On Committee Role. There are openings on several committees including marketing, technology, membership and more, including the two committees profiled below.

Grant Review Committees (GRCs). GRCs are at the forefront of what we do for the community. On behalf of the membership at large, the GRCs review and evaluate grant applications and make the initial decisions about where to invest for the greatest impact. All members are invited to join a GRC. In 2018 we will have four GRCs, with 20 to 25 Impact Austin members per committee and experienced peers leading the review process. GRCs meet four to five times between January and April, perform in-depth reviews of grant applications, conduct site visits and select two finalists per area to be voted on by the entire membership in June.

Serving on a GRC is one of the most impactful ways to participate in the organization, learn about the needs in our community, and experience our best-in-class grant review process. GRC signup will occur from late October through December. Contact us [here](#) to learn more about this role.

Would you like to serve in a leadership role in our grantmaking process? We are seeking Impact Austin members with prior GRC experience to lead a GRC as a co-chair. This rewarding role requires a commitment to attend training, prepare for and lead committee meetings and site visits, and prepare finalists for the annual meeting. Please contact our [Grants Chair](#) if you are interested.

Impact Austin's Philanthropy Education Committee (Philanthropy EDU). Philanthropy EDU is seeking new volunteer members. If you are creative, like to plan, research and educate other Impact Austin members about philanthropy in our community, this committee is for you! These roles are busiest around the times of the event planning - likely two times per year - and we estimate it's about 10-20 hours/year. If you would like to join in or learn more, email [Cindy Kittle](#).

Help with an Event. From membership-wide Discovery Day or the Annual Meeting to more localized Zone activities, Impact Austin holds numerous member events throughout the year. If event planning or day-of-event support fits your style, there is an opportunity for you. Please email [Lisa Apfelberg](#) to connect to this opportunity.



Help Promote Impact Austin. The ability of Impact Austin to serve grows stronger as we expand our membership base. No message means more to a potential member than an endorsement from a colleague or friend. And if you use Facebook or other social media, your message becomes even stronger when you follow Impact Austin and share our posts! Reinforce our story and help us expand our reach by following us on Facebook, Twitter, Instagram and LinkedIn, and share our posts.



Get to Know Your Zone. Impact Austin members seeking more opportunity to get to know their Impact Austin neighbors have a new way to do so. Impact Austin's "Zone" initiative kicked off in the spring and members from across the greater Austin area are enjoying the opportunity to participate in a range of new activities. Impact Austin zones were developed around zip codes to create and foster a deep sense of connection and community to enhance the membership experience.

Click [here](#) to learn more about events happening in your neighborhood!

Meet new people, apply your skills. So many opportunities exist, big and small. And they add up! Invite a prospective member, serve on a committee, attend educational events and more. Find out about ways you can enrich your own experience and increase your impact

[here!](#)

Spotlight on Member Kali' P. Rourke

Veteran Volunteer Shares her 'Kool-Aid' Recipe

"Drinking the Kool-Aid" is the way I describe that feeling you get when you have been part of something that made a difference. It is that shot of adrenaline we experience when we first realize that we, as individuals, have the power to change things for the better in our community. It leads some of us into service with institutions in our life, such as schools, churches and more. For me, that rush comes from my work with Impact Austin and other nonprofits including the Travis Community Education Foundation, now known as the Seedling Foundation which earned an Impact Austin grant in June 2017.



Kali' Rourke

I joined Impact Austin in 2005. I had just come off my term as PTA President of Murchison Middle School and had finished my first year on the board of the Travis Community Education Foundation. Looking for my next opportunity, I saw a story about the fledgling collective giving group, Impact Austin. My experience gave me the sense to recognize the potential of the group and I joined immediately after hearing a presentation from Rebecca Powers.

I started making friends and finding out about opportunities to use some of the skills I had gained in leadership roles with other nonprofits for the benefit of Impact Austin. At the same time, I was learning what makes an outstanding program in an excellent nonprofit, and applied that knowledge in guiding other nonprofits. For me, it was a remarkable time of simultaneously gleaning and applying best practices across the nonprofit community.

It is a pleasure to be able to practice philanthropy in an informed, professional, and high-integrity way, and I credit Impact Austin with much of the expertise I have gained and used to benefit others. It has been an exhilarating, wild ride, with precious friends found and held close along the way. "Women can do more than Woman!" San Diego's collective giving group shared that motto with us years ago, and I believe it. **Kali' P. Rourke**

Editor's note: Rourke currently serves as the blog editor for Impact Austin. Read more about her volunteer experience [here](#).

Community Partner Update - Westcave Outdoor Discovery Center

Westcave Provides a Break for Harvey Evacuees with an Afternoon at the Park



When Impact Austin awarded a grant of \$80,000 to the Westcave Outdoor Discovery Center to support a children's program called Children in Nature Collaborative of Austin (CiNCA), neither organization envisioned an opportunity to serve those outside Central Texas. But when hurricane Harvey devastated parts of Houston and the needs of displaced families became overwhelming, Westcave teamed with the City of Austin Parks and Recreation department to organize a 'break' for evacuees. On September 9, just days after Harvey came ashore, those sheltering in the Metz Recreation Center in Austin were invited to join a nature outing. Nearly 50 children and adults took the Roadrunner Outdoor Adventure Bus to the Austin Nature and Science Center, and enjoyed a quiet day away from the challenges of temporary housing and schools.

Impact Austin's grant to Westcave Preserve, awarded in 2015, was used to underwrite the

purchase and refurbishment of the Roadrunner Outdoor Adventure Bus. Intended to address the lack of transportation - one of the greatest barriers to getting children from their neighborhoods to environmental outings - the Roadrunner Bus is a key resource in the mission of CiNCA to reconnect kids to the wonder and joy of the natural world. Westcave's generosity and willingness to employ its resources - including the Roadrunner Bus - helped create a desperately needed sense of 'home' for our temporary residents. Read more about Westcave Preserve and CiNCA [here](#).

Save the Date

Discovery Day - January 13, 2018

Annual Meeting - June 4, 2018



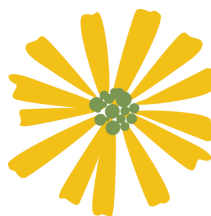
A Last Word - Let's Go Shopping

The holiday shopping season is approaching (collective gasp), but we can turn a chore into something more by using smile.amazon.com to support Impact Austin operations. Amazon donates 0.5% of the price of your eligible AmazonSmile purchases to the charitable organization of your choice. To shop at AmazonSmile simply go to smile.amazon.com and designate Impact Austin as the organization you'd like to benefit. Amazon will remember this selection each time you shop. In every other way, your shopping experience is unchanged: same account, settings, shopping cart, wish list, and registries.



We're Listening

We'd love to hear from you....what do you want to learn more about? What type of information is useful for you? Contact us at contact@impactaustin.org.



JOIN TODAY

